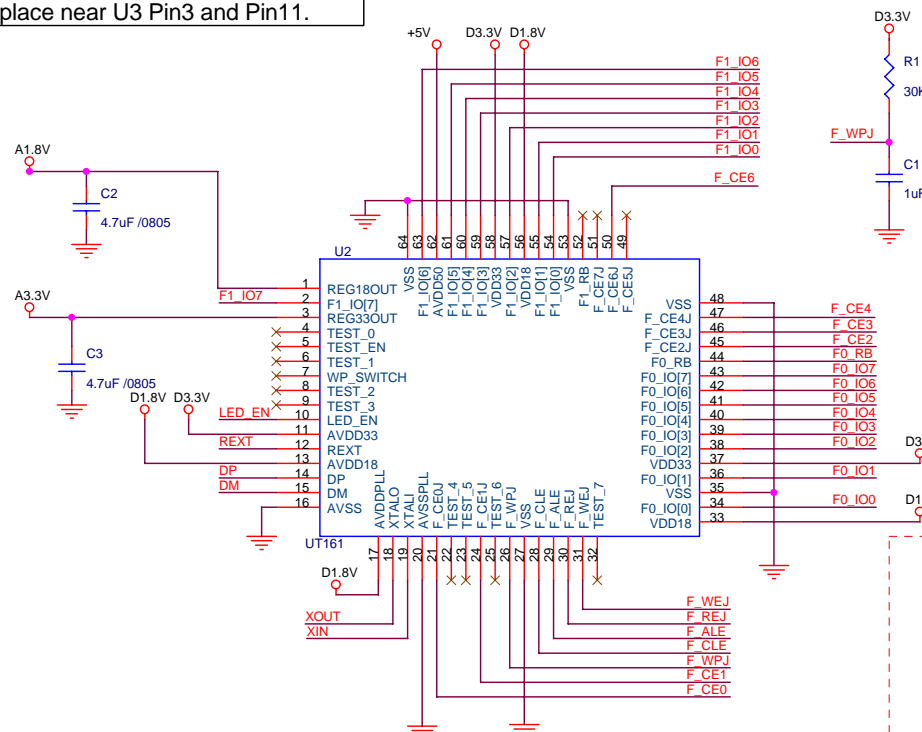
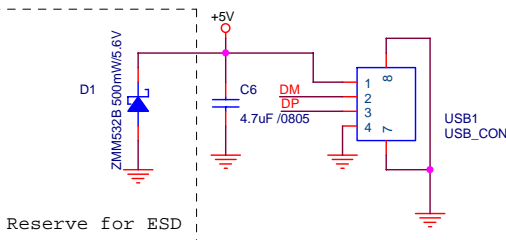
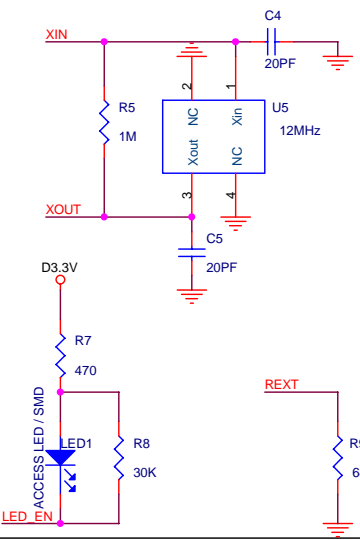


C2 place near U3 Pin1 and Pin13.
C3 place near U3 Pin3 and Pin11.

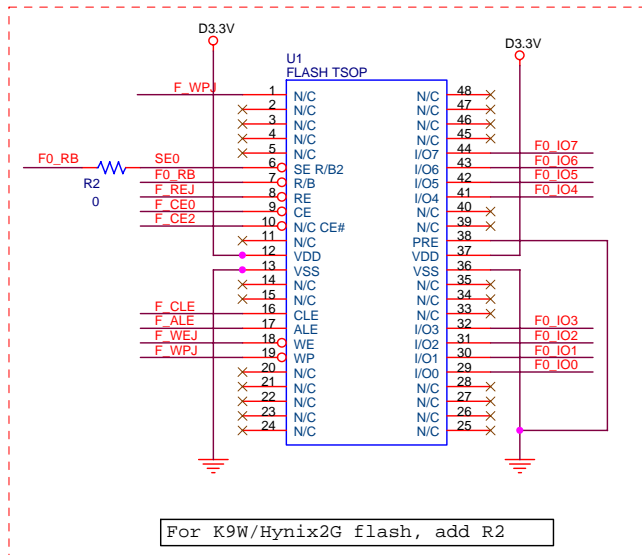
Place near U3.



Layout note: C4 and C5 ground not connect together.

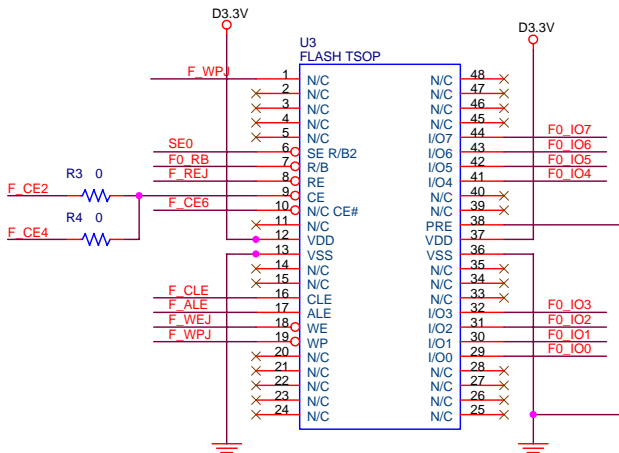


Layout note: USB differential trace is 90 Ohm characteristic impedance.



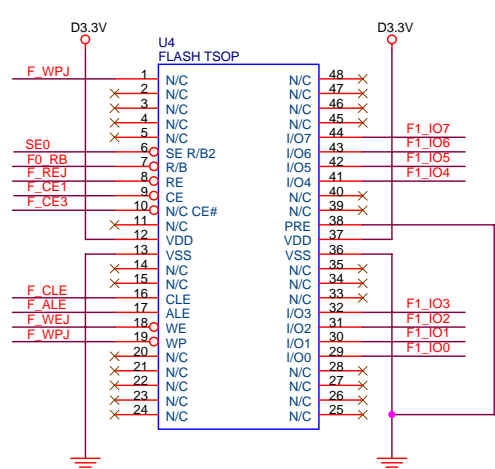
For K9W/Hynix2G flash, add R2

MLC run Single Channel
Mount U3



For K9W/Hynix2G flash, add R4
remove R3

SLC run Dual Channel
Mount U4



upload... www.mydigit.net

USBest Technology Inc.			
Title	SLC Dual & MLC Single / 2 Flash PCB		
Size	Document Number	UT161-A1CA-T6	
B			Rev 1.3
Date	Monday, June 06, 2005	Sheet	1 of 1